

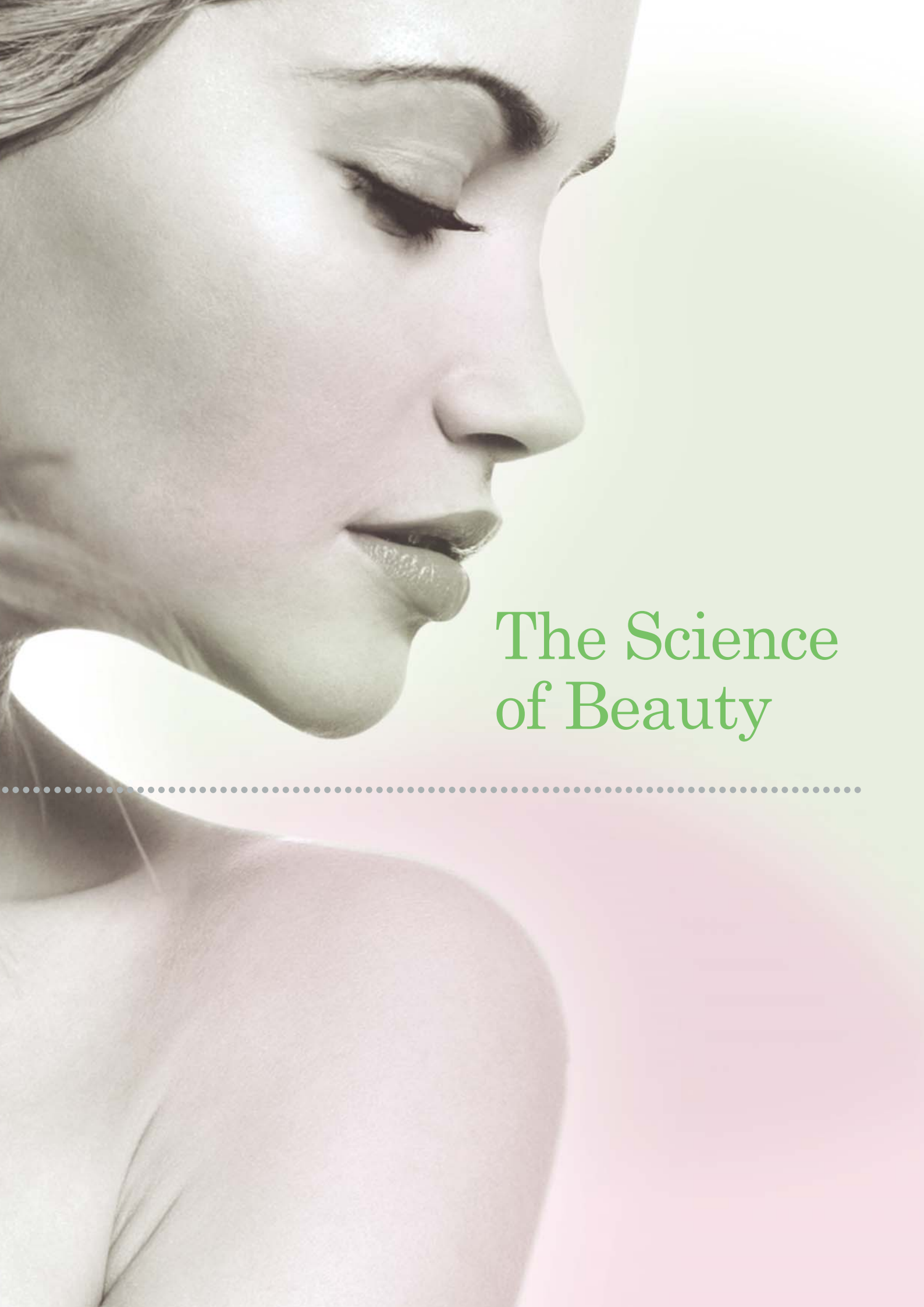


**INDIBA<sup>®</sup>**  
DEEP BEAUTY  
PROIONIC BODY CARE SYSTEM



# Feel the Deep Beauty Experience

Unique  
Proionic<sup>®</sup> Treatments  
for Face and Body  
Enhancements



# The Science of Beauty

---



## Pioneers in diathermy

Since 1983 INDIBA® has been dedicated to the research, development and marketing of medical devices and beauty equipment with electro-regenerative energy, in our desire to enhance the beauty of the human body through the advance of science.

The company was a pioneer in diathermy equipment, which generates a controlled increase of temperature on an area of the body. This is the result of a high-frequency electric current passing through electrodes placed on the surface of the patient's skin, which increases localised blood flow and creates beneficial biological effects that can be either medical or aesthetic.

The results in professional beauty obtained by the first skin regenerator using capacitive electric transfer and the first electronic recuperator, caused a technological revolution and the company obtained several patents, amongst others: the CAP+RES patent (Capacitive and Resistive electrode system), which increases the effectiveness of the treatment, and the EMC patent (Electro-Magnetic Compatibility) which prevents the radiofrequency equipment from interfering or being interfered with by other systems.

## Recognised quality and efficiency

INDIBA® developed improvements in its equipment and expanded the range throughout the 1990's, continuously enhancing the features and aesthetic applications. The company also performed research and clinical/scientific studies, obtaining important national and international recognition from the industry. **30 years of proven experience with more than 15,000 pieces of equipment installed all over the world.**

International awards acknowledge INDIBA®'s contribution to the sectors of beauty and aesthetic medicine, including Gold and Silver medals from innovation and invention exhibitions in Geneva, Brussels and Madrid. Mr. Josep Calbet, founder of INDIBA® and the researcher who discovered this technology, has also received awards from the Spanish Royal Household in honour of the Company and its continued efforts in serving the customer.

## Latest discoveries and challenges

The latest research by companies focusing on the study of ion exchange and electric cell potential has led to the Proionic® System, which explains why INDIBA® equipment is so effective in all types of aesthetic applications.

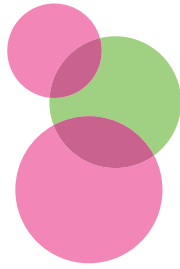
**INDIBA® Deep Beauty and the Proionic® System** mean one further enhancement in customer service, with priorities such as improved training, higher standards of service, more treatments and additional promotional tools. These are our current objectives to facilitate the work undertaken by professionals in the field of beauty and well-being.



---

Feel the Deep Beauty  
experience





## Professional guarantee and well-being for the customer

INDIBA® Deep Beauty is a complete experience, both for the beauty professional and the clients of the Beauty Salon and Spa. It is a method that is unique to the market and is based on **patented technology**, the Proionic® System, alongside **an exclusive aesthetic application method with its own protocols**, that allows all types of facial, hair and body treatments to be performed. This patented and clinically proven technology, with results from the very first session, acts from within improving cell function in all treatments. It is a painless beauty solution that responds to the needs of the customer whilst guaranteeing quality and results. **The "Deep Beauty Experience" is our difference.**

## Unique application method

The beauty professional works with INDIBA® in a way that is completely unique in the market, using his or her hands as an electrode on numerous occasions and alternating with the traditional system, depending upon the particular treatment. **This increases the customer's sensation of well-being and the effectiveness of aesthetic outcomes.** The application method, added to the results, technology, features and quality of the equipment ensures that INDIBA® Deep Beauty is an essential tool for any Beauty Salon or Spa.

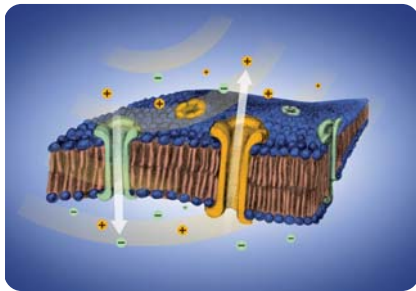
The  
difference  
is  
Indiba®





Proionic<sup>®</sup> System:  
technology  
that works  
from within

---

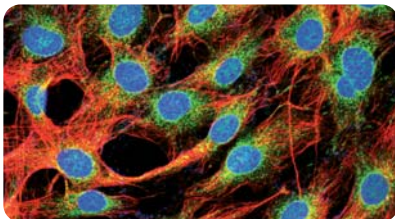


**CELULAR IONIC FLOW**  
is balanced

# 448 kHz

is the radiofrequency used by the Proionic® System to encourage the passing of the ion through the channels of the membrane so that the cell's ion exchange is balanced. Thus, the cell recovers its functions.

**With microcirculation re-established and improvement in intracellular oxygen flow:**



**The NEOCOLLAGENESIS process is stimulated.**

Vasodilation provides more nutrients to the fibroblasts, increasing the synthesis of collagen and elastin.



**The ELIMINATION OF FATS is stimulated.**

Adipocytes quickly lose volume and the fat disappears naturally.

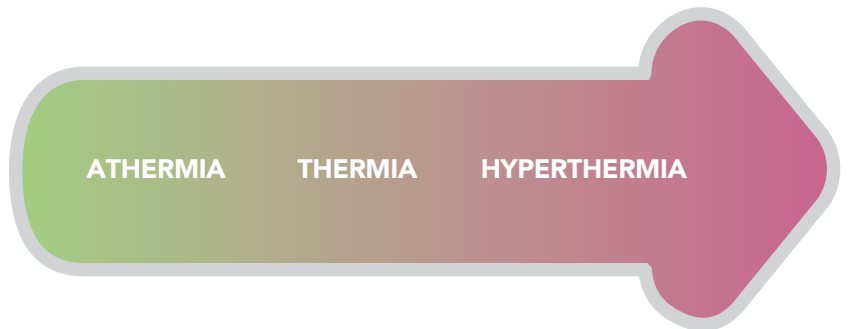
Scientific research carried out in the field of cell biochemistry has demonstrated that the use of radiofrequency affects ion flow through cell membranes and electric potential. These factors have beauty consequences on the skin by improving its overall appearance and characteristics. Based on this knowledge, INDIBA® has developed the Proionic® System, with a specific radiofrequency of 448 kHz that boosts these outcomes providing the best aesthetic results.

## Why 448 kHz?

This is the suitable frequency for correct mobilisation of ions. With the suitable flow of ions between the extracellular and intracellular medium, the **cell's electric potential is balanced and the cell recovers its vital functions**. This process is the basis of the Proionic® System, which combines both capacitive and resistive modes to obtain amongst others incredible effects of revitalisation, rejuvenation, fat reduction, body contouring, moisturising and toning.

## Effects of the Proionic® System on biological processes

The Proionic® System generates various biological processes in the cell and three basic actions in all types of tissue. Depending on the treatment required, the power increase of the equipment is adjusted, adding the benefits of each effect to the previous one.



The action mechanism is based on three basic effects:

### 1| **NON-THERMAL:**

#### **Biostimulation**

Activation of metabolism and cell nutrition, circulation in the extracellular matrix

### 2| **THERMAL:**

#### **Biostimulation + Microcirculation**

Increase in vasodilation, improvement of blood flow, cell and tissue oxygenation, drainage effect

### 3| **HYPERTHERMAL:**

#### **Biostimulation + Microcirculation + Hyperactivation**

Activation of metabolism and enzymes, tissue detoxification, drainage of catabolic products, stimulation of endogenous repair mechanisms

---

# Multiple benefits for extraordinary beauty



| FIRMING

| TONING

| SHAPING

| REGENERATION

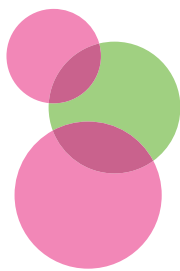
| REVITALISATION

| OXYGENATION

| MOISTURISING

| REJUVENATION





## Aesthetic indications

### facial

- Reduces wrinkles and expression lines
- Improves the appearance of bags under the eye and dark circles
- Anti-ageing lifting effect
- Firming effect on the skin of the neck and décolleté area
- Moisturises the skin, increasing elasticity and restoring its overall appearance

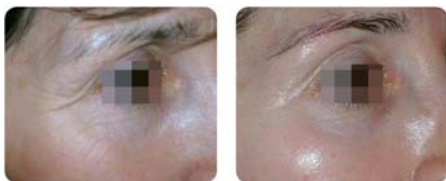
### hair

- Promotes hair growth
- Prevents hair loss
- Maintains hair density
- Produces stronger, more robust hair

### body

- Body contouring
- Cellulite, stretch marks, saggy arms
- Breast lifting
- General well-being

#### ANTI-AGING 8 sessions



BEFORE AFTER

#### HAIR GROWTH 3 months of application



BEFORE AFTER

#### HIPS MODELING 10 sessions



BEFORE AFTER

#### ANTI-STRETCH 3 sessions



BEFORE AFTER

## All types of aesthetic cases and tissues

As a result of the use of an adequate frequency, the adjustment of capacitive and resistive techniques and the regulation of the equipment power, different aesthetic cases and tissues can be treated. The active electrode provides a better current density, which in addition to the larger surface area of the neutral electrode, allows improved dispersion. **The capacitive mode is suitable for surface and loose tissue** and the resistive mode for thick, oily and fibrotic tissue, thus obtaining maximum effectiveness in a variety of beauty treatments.

## Proven and visible results from the very first sessions

INDIBA® has numerous documented cases in facial and body treatments that prove the effectiveness of the system. Also scientific collaboration with universities, hospitals and clinical studies confirms that these results have outstanding professional references: Dr. Pinto (Argentina), Dr. Montree (Thailand), Dr. Naranjo (Spain), Dr. Junco (Spain), Dr. Almeida (Spain), Dr. Delmar (France), Dr. Wu (Singapore), Dr. Shirakabe (Japan).



**E. Neher and B. Sakmann, Nobel Prize in Physiology**

*The regulation of ion channels influences the life of the cell and its functions under normal conditions.*



**Dr. Pinto and Dr. Legrand**

*The resistive and capacitive methods are suitable for all types of cellulite. By combining capacitive/resistive technology numerous biological effects are caused.*

# Devices and services for your success

## INDIBA® Deep Beauty

Three models that adapt to any professional requirement.



DEVICES	ER25	ER42	ER45
Ideal for:	Facial, neck, décolleté, hair, hands and feet treatments	All types of facial and body treatments  Optional: hair treatments	Facial and body treatments thick tissues and difficult cases  Optional: hair treatments
Technical characteristics	CAP 50 V RES 25 W	CAP 350 V RES 100 W	CAP 450 VA RES 200 W
Electrode	CAP: circ. 30, 40 mm curv. 19, 25 mm RES: 35 mm	CAP: 30, 40, 55, 65 mm RES: 35, 65 mm	CAP: 30, 40, 55, 65, 80 mm RES: 35, 65, 90 mm
Software	Without protocol guidelines	Without protocol guidelines	With protocol guidelines
Measurements	36,5 x 43 x 17 cm	36,5 x 43 x 17 cm	46 x 47 x 17 cm
Weight	9 kg	10 kg	14 kg

2-year warranty

## Accessories

INDIBA® has developed a **professional trolley** to facilitate easy use in the cabin and an orderly display of accessories. Also INDIBA® has designed a **transport case**, certified with ISTA (International Safe Transit Association), for easy device carrying and this has been adapted to accommodate INDIBA® accessories and creams.

In addition, you can now extend the treatment range of your current INDIBA® Deep Beauty device with the new **INDIBA® HAIR PACK** with its accompanying accessories and hair treatment protocols.



## INDIBA® Proionic® Products

INDIBA® Proionic® products have been specially designed to improve the effectiveness of INDIBA® Deep Beauty treatments.

Three types of cream for all types of beauty treatments are available: facial, body and cellulite. They are paraben-free, pH neutral and reduce the skin's resistance to current thereby increasing electrical conductivity in the area being treated. As a result of their texture it is easier to slide the electrodes over the skin during application. This makes the professional task easy and effective with optimal results.

Hair-care Lotion and Vitamin Complex possess galenic properties that respect the hair attributes: non-greasy, oil-free formulae. With the addition of plant extracts the hair's nutritional status is enhanced and both the appearance and vitality is improved.



## Training courses and treatment protocols

Ongoing training of INDIBA® Deep Beauty methodology and knowledge of Proionic® System, as well as their aesthetic applications, are essential to continue to provide standards of excellence in the provision of professional treatments. Therefore, INDIBA® periodically offers theory and practical training sessions with official INDIBA® certification. Similarly, we provide a number of protocols for the majority of beauty and specialised treatments.



## Marketing Support

Our continuous support in promotional, image, advertising and communication tools is essential for introducing INDIBA® Deep Beauty to Beauty salon clients.

**Starter pack:**  
to start working with  
the INDIBA® Deep Beauty system



**Promotional pack:**  
to promote INDIBA® Deep Beauty  
treatment to your clients



## Finance solutions

Different finance solutions are available to facilitate the purchase of INDIBA® Deep Beauty devices, such as the new PPU (Pay Per Use) system that offers maximum flexibility and operational management.

**INDIBA® DEEP BEAUTY,  
IN THE TOP BEAUTY SALONS AND SPA AROUND THE WORLD:**



The  
difference  
is  
**Indiba®**



[info@indibadeepbeauty.com](mailto:info@indibadeepbeauty.com)

[www.indibadeepbeauty.com](http://www.indibadeepbeauty.com)



## Face & Body enhancements

### face

- | Reduces wrinkles and expression lines
- | Dramatically improves the appearance of the eye contour
- | Firming, Lifting and rejuvenation effect
- | Redefines facial contour

### body

- | Body contouring
  - | Cellulite, stretch marks, saggy arms
  - | Breast lifting
  - | General well-being
- .....

INDIBA® DEEP BEAUTY,  
with a patented and clinically proven  
technology, the Proionic® System is unlike  
any treatment you have ever had, because  
it works from within, offering great  
aesthetic outcomes for face and body  
treatments.

ASK YOUR INDIBA BEAUTY CENTER  
FOR ADDITIONAL INFORMATION:

[www.indibadeepbeauty.com](http://www.indibadeepbeauty.com)

The  
difference  
is  
Indiba



## Enhance your beauty from within



**INDIBA®**  
DEEP BEAUTY

# Feel the Deep Beauty Experience



INDIBA® DEEP BEAUTY is the highly effective, pain-free solution to meet your beauty needs. With visible results from the very first session, INDIBA® DEEP BEAUTY offers body sculpting, rejuvenation and cellulite treatments.

## DEEP ACTION FOR DEEP BEAUTY

The exclusive INDIBA® DEEP BEAUTY method rebalances the ions cellular exchange, helping cells recover their natural function. This enables the skin tissue to regain lost elasticity, reduce fat and allow the oxygen to flow more freely between cells. With microcirculation restored, the skin will be significantly rejuvenated, revived and healthy.



## PROIONIC® SYSTEM: 3 EFFECTS, MULTIPLE BENEFITS

- 1 | **NON-THERMAL:** bio stimulation, improved nutrition, circulation and metabolism of the cells
- 2 | **THERMAL:** greater microcirculation, vasodilation and tissue oxygenation
- 3 | **HYPERTHERMAL:** detoxification, fat removal and tissue recovery



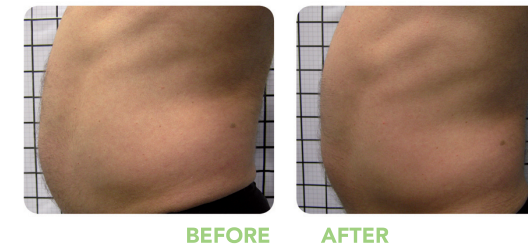
## VISIBLE RESULTS FROM THE VERY FIRST SESSIONS

### A | FACE REJUVENATION (5 sessions)



Courtesy of:  
Benessere (Argentina)

### B | ABDOMEN REDUCTION (10 sessions)



Courtesy of: Fac. Ciências  
de la Salut i de la Vida  
Univ. Pompeu Fabra (Spain)

### C | VOLUME REDUCTION (17 sessions)



Courtesy of:  
Soin Parler Avec (Japan)

## THE SKIN REVIVES AND REJUVENATES

CELL REGENERATION | OXYGENATION | MOISTURISING |  
FIRMING | TONING | RESHAPING | LIFTING |